

PUSH-IN WIRE CONNECTORS

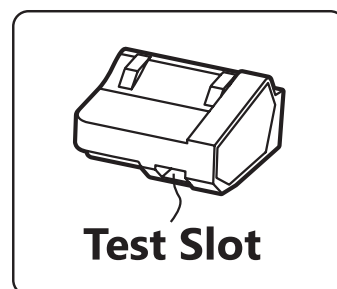
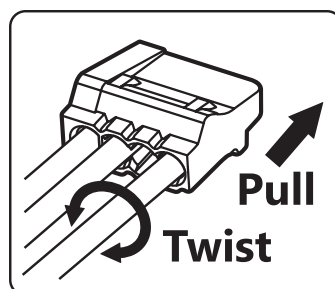
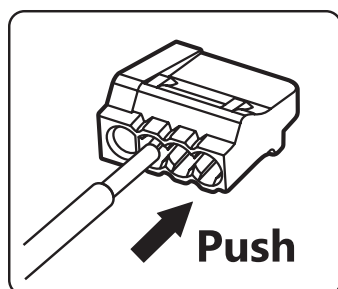
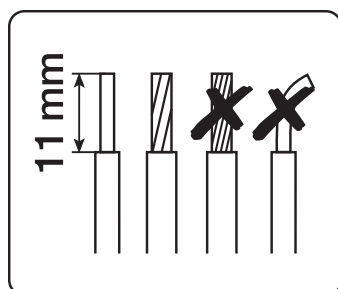
☐ **PC2252** ☐ **PC2253**
☐ **PC2254** ☐ **PC2255**
☐ **PC2258**

Model

To be sold only with installation instructions

Installation Instructions:

1. Turn off power before installing or removing connectors.
2. May use rigid solid and rigid stranded copper conductors.
3. Strip wires approximately 11 mm/0.43 inches.
4. Insert stripped conductors into the connector fully.
5. Test your connection through the slot with a voltage tester.
6. To correct or change, hold the wire to be removed and twist alternately left and right while pulling on the connector.



*600V Max. building wiring; 1000V Max. signs or luminaires.



81U0
Wire Conn.

*600 V

105°C

22-12 AWG, Sol. Cu

Note: UL Listing is valid for Model PC2258 only.



24 A

450 V

T85°C

0,5-2,5 mm², Rigid



24 A

450 V

T85°C

0.5-2.5 mm², Rigid

Warranty limited solely to repair or replacement; no warranty of merchantability, fitness for a particular purpose or consequential damages



MADE IN CHINA

